

# Looking at SSIs from the other side of the bed.

Brenda Helms BSN, MBA/HCM, CIC



# What Impact does an SSI have on the patient?

- Loss of job/business
- Loss of income
- Increased medical bills
- Increased prescription costs
- Ongoing therapy costs
- Prosthetics/braces/orthotics

# What impact does an SSI have on the patient's family and loved ones?

- Fear
- Financial hardships
- Emotional rollercoaster
- Feelings of helplessness
- Frustration
- Anger/resentment



# Rick's Story

Summer/Fall 2007

- Horse accident- did not listen to wife regarding how to handle horses- horse proved wife right.
- Injury to knee and ankle
- Required reconstruction of both
- 2 day stay in hospital



# Rick Prior to Injury

- Owned his own insurance adjusting business
- Enjoyed fishing and camping
- Rode horses
- Trained horses and dogs
- Kept a garden the size of a football field every year
- Volunteer Fire Fighter



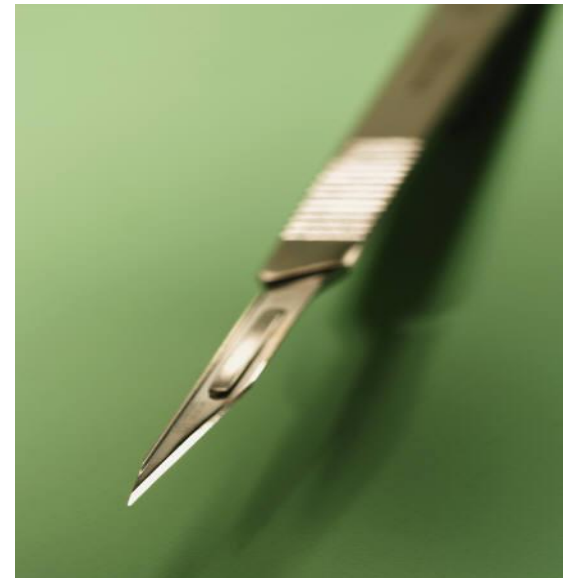
# The next year

- Knee drained of purulent fluid 6 times
- Antibiotics prescribed 7 times
- Surgeon states it is not a surgical site infection
- Knee red
- Knee warm
- But “not a surgical site infection”



# January 2008

- Hip replacement surgery
- Planned 3 day hospital stay
- Fairly independent prior to this surgery
- Should have regained the quality of life he had prior to the horse injury



# While still in hospital

- Developed MRSA CAUTI
- Stage II Pressure Ulcer
- Cellulitis of surgical site incision
- Overloaded with IV fluid which led to 3<sup>rd</sup> spacing and further skin breakdown





# From the Hospital to Rehab

- Transferred to a rehab facility 7 days after hip surgery
- 1<sup>st</sup> physical therapy treatment since surgery received at rehab facility
- No therapy received in hospital
- Stayed in rehab facility for 5 days



# 1 month after the surgery

- Hematoma on hip drained of purulent drainage
- Signs of nerve damage
- Drop foot
- Inability to distinguish hot and cold
- Increased complaint of pain
- Started on Cephalexin and seemed to get a little better

# 3 weeks later

- Incision warm and red
- Changed antibiotic to Vancomycin
- Seemed to get better
- Continued to have severe chronic pain issues
- Unable to work.
- Depression



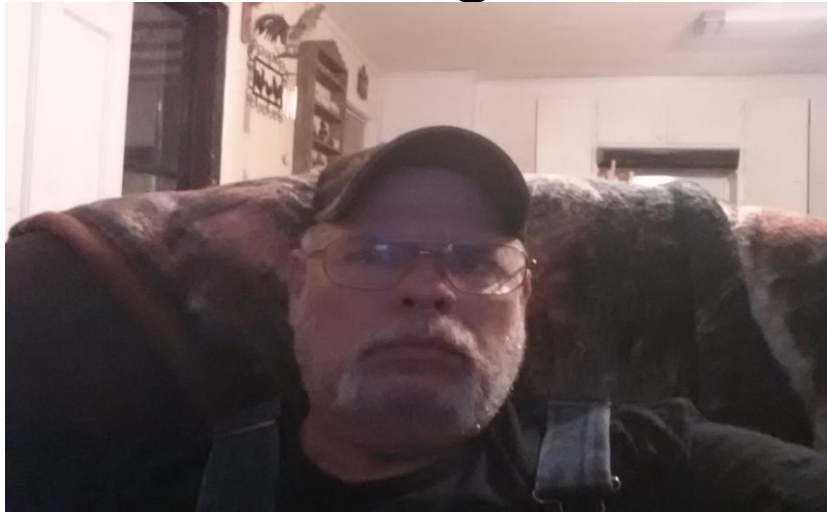
# July 2008

- Running fever
- 10 centimeter reddened warm area on buttock
- Primary care physician sent him to surgeon
- Surgeon said not SSI go to PCP
- Ended up in ED



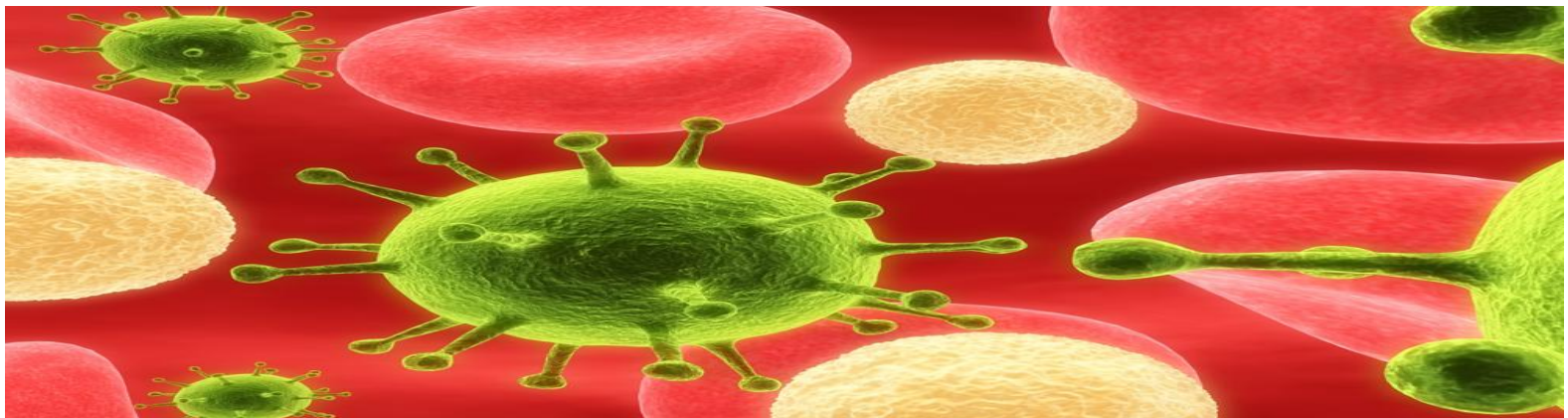
# IV antibiotics

- IV Vancomycin as outpatient in ED
- Twice a day for 10 days
- Prescribed oral antibiotics to take once IV course was completed
- Rick updated his surgeon on the care plan



????????????????????

- Surgeon discontinued oral antibiotics stated they were not necessary
- Discussed with wife (ME)
- Decided to follow the surgeon's directions
- Did not take oral antibiotics and.....



# 10 days later

- Back to the ED with fever
- ED physician consulted a different surgeon
- Surgeon recommended removing the prosthesis for at least 6-8 weeks then re-implant
- **OMG!!!!!!!!!!!!!!!!!!!!!!!!!!!!**



# Original Surgeon has a Plan

- Come back here we will run some tests
- May not have to remove prosthesis
- Next day admitted for PICC Line placement and IV antibiotics
- Spent 3 days in the hospital
- Consulted ID physician
- Home with 14 days of IV antibiotics



# True cost of SSI

- Loss of business
- Loss of income
- Loss of self reliance
- Loss of self respect
- Loss of independence
- Loss of self esteem

# Rick Today

